

Proceedings of  
the Fourth European Conference on  
Computer-Supported Cooperative Work

10-14 September, 1995, Stockholm, Sweden

ECSCW '95

*Edited by*

HANS MARMOLIN, YNGVE SUNDBLAD  
*Interaction and Presentation Laboratory,  
Department of Numerical Analysis and Computing Science,  
KTH, Stockholm, Sweden*

and

KJELD SCHMIDT  
*System Analysis Department,  
Risø National Laboratory,  
Roskilde, Denmark*



KLUWER ACADEMIC PUBLISHERS

DORDRECHT / BOSTON / LONDON

A C.I.P. Catalogue record for this book is available from the Library of Congress.

ISBN 0-7923-3697-6

---

Published by Kluwer Academic Publishers,  
P.O. Box 17, 3300 AA Dordrecht, The Netherlands.

Kluwer Academic Publishers incorporates  
the publishing programmes of  
D. Reidel, Martinus Nijhoff, Dr W. Junk and MTP Press.

Sold and distributed in the U.S.A. and Canada  
by Kluwer Academic Publishers,  
101 Philip Drive, Norwell, MA 02061, U.S.A.

In all other countries, sold and distributed  
by Kluwer Academic Publishers Group,  
P.O. Box 322, 3300 AH Dordrecht, The Netherlands.

*Printed on acid-free paper*

Cover Design by Gary Newman,  
Newman IAF Designs, Stockholm, Sweden

All Rights Reserved  
© 1995 Kluwer Academic Publishers  
No part of the material protected by this copyright notice may be reproduced or  
utilized in any form or by any means, electronic or mechanical,  
including photocopying, recording or by any information storage and  
retrieval system, without written permission from the copyright owner.

Printed in the Netherlands

## From the editors and chairs

Welcome all readers of these Proceedings, participants at ECSCW'95 as well readers after the conference! We hope that you find the papers interesting, informative and stimulating contributions to the multi-disciplinary Computer-Supported Cooperative Work field.

Out of 95 papers submitted to ECSCW'95 the Programme Committee had the difficult task of choosing the 21 papers to be presented at the conference paper sessions and in these Proceedings. The review process has been very thorough. Each paper was reviewed by at least three Programme Committee members. The final decisions were made at an extensive Programme Committee meeting after deep discussions. Many interesting papers could not be accommodated because of the limitations imposed by the choice to maintain an interdisciplinary single-track.

Note that the papers in these Proceedings are but one prominent part of a wide set of activities at ECSCW'95 which also comprises Workshops, Tutorials, Demonstrations, Videos, Posters as well as a social programme. We hope that all participants, academics as well as professionals, will find rich opportunities to discuss, to learn and, consonant with theme of the conference, to *interplay*.

Demonstrations, Posters and Videos that have been accepted for the conference are presented in a supplement to these Proceedings.

ECSCW'95, and these Proceedings, would not have been possible without dedicated work from the following persons, who we gratefully thank:

- All those who submitted a paper: Receiving many good submissions from contributors that accept a rigorous selection procedure is necessary for a good conference.
- All those who proposed and contribute with Workshops, Tutorials, Demonstrations, Videos and Posters: A rich programme containing those components is crucial for a stimulating conference.
- All those who contributed to the organisation of ECSCW'95: Planning and carrying through an international conference is complicated and required careful attention to a lot of details.
- All the student volunteers: The contribution of the volunteers to making the conference run smoothly and in good spirit is of great value.
- All those who sponsored ECSCW'95: This kind of conference needs a lot of resources where sponsors help so that fees can be held at a reasonable level.
- All those who contributed to the definition of the technical programme: The Programme Committee did a great and difficult job. We hope that the written reviews returned to the authors of submitted papers (whether accepted or not) help them in their work.

- The publishers and designer of the Proceedings: A well designed, printed and distributed book is an important and attractive source and transfer medium of knowledge to the international CSCW community.
- The promoters and organisers of the North American ACM conferences on CSCW: The tacit agreement to interleave their bi-annual conferences with our bi-annual European conferences and the opportunity to announce each others' conferences as if they were a single track, of which ECSCW'95 is the 9th, significantly contributes to make the ECSCW conference the international CSCW research conference of that year and to defeat geographic barriers.

Hans Marmolin, Kjeld Schmidt, Yngve Sundblad

## Sponsors of ECSCW '95

NUTEK (Swedish Board for Technical Development), Sweden

Ericsson, Sweden

Tele 2, Sweden

Telia, Sweden

KTH (The Royal Institute of Technology), Sweden

The Graphics Institute, Stockholm University, Sweden

# ECSCW '95 Conference Committee

Chair Yngve Sundblad, KTH, Stockholm

ECSCW '93 (in Milano) Past Chair: Carla

Simone, University of Torino

Technical Programme Chair: Hans

Marmolin, KTH

Proceedings: Kjeld Schmidt, Risø National

Laboratory, Denmark

Demonstrations/Videos. Konrad Tollmar,

KTH

Panels. Lennart Fahlén, SICS, Stockholm

Tutorials: Kai-Mikael Jaä-Aro, KTH

Workshops. Pål Sorgaard, Norwegian

Computer Centre, Oslo

Treasurer: Nils-Erik Gustafsson, Ellemtel,

Stockholm

Student volunteers Ann Lantz, KTH

Local arrangements: JoAnn Gerdin, KTH

Conference Support:

Jacqui Forsyth, Lancaster University,

Kristina Groth, KTH

Thierry Reigner, KTH

North American publicity: Karen Ruhleder,

Worcester Polytechnic

## Proceedings editors

Kjeld Schmidt, Risø National Laboratory,  
Denmark,

Hans Marmolin, KTH, Sweden

Yngve Sundblad, KTH, Sweden

## ECSCW '95 Program Committee

Liam Bannon, University of Limerick, Ireland  
Steve Benford, University of Nottingham,  
U.K.

Jeanette Blomberg, Xerox PARC, Palo Alto,  
USA

John Bowers, Manchester University, U.K.  
Tone Bratteteig, University of Oslo, Norway  
Susanne Bødker, Aarhus University, Denmark  
Matthew Chalmers, UbiLab, Zürich,  
Switzerland

Claudio Ciborra, Theseus Institute, Sophia  
Antipolis, France

Prasun Dewan, University of North Carolina  
at Chapel Hill, USA

Lennart Fahlén, SICS, Stockholm-Kista,  
Sweden

Jonathan Grudin, University of California at  
Irvine, USA

Christian Heath, King's College, London,  
U.K.

Hiroshi Ishii, NTT, Kanagawa, Japan

Simon Kaplan, University of Illinois at  
Urbana-Champaign, USA

Viktor Kaptelinin, Umeå University, Sweden

John King, University of California at Irvine,  
USA

Laszlo Kovacs, MTA-SZTAKI, Budapest,  
Hungary

Kalle Lyytinen, University of Jyväskylä,  
Finland

Marilyn Mantei, University of Toronto,  
Canada

Hans Marmolin, KTH, Stockholm, Sweden  
(Chair)

Giorgio de Michelis, University of Milano,  
Italy

Christine Neuwirth, Carnegie-Mellon  
University, Pittsburgh, USA

Agneta Olerup, Lund University, Sweden

Encarna Pastor, University of Madrid, Spain

Atul Prakash, University of Michigan at Ann  
Arbor, USA

Wolfgang Prinz, GMD-Bonn, Germany

Mike Robinson, GMD-Bonn, Germany

Tom Rodden, Lancaster University, U.K.

Yvonne Rogers, University of Sussex,  
Brighton, U.K.

Kjeld Schmidt, Risø National Laboratory,  
Roskilde, Denmark

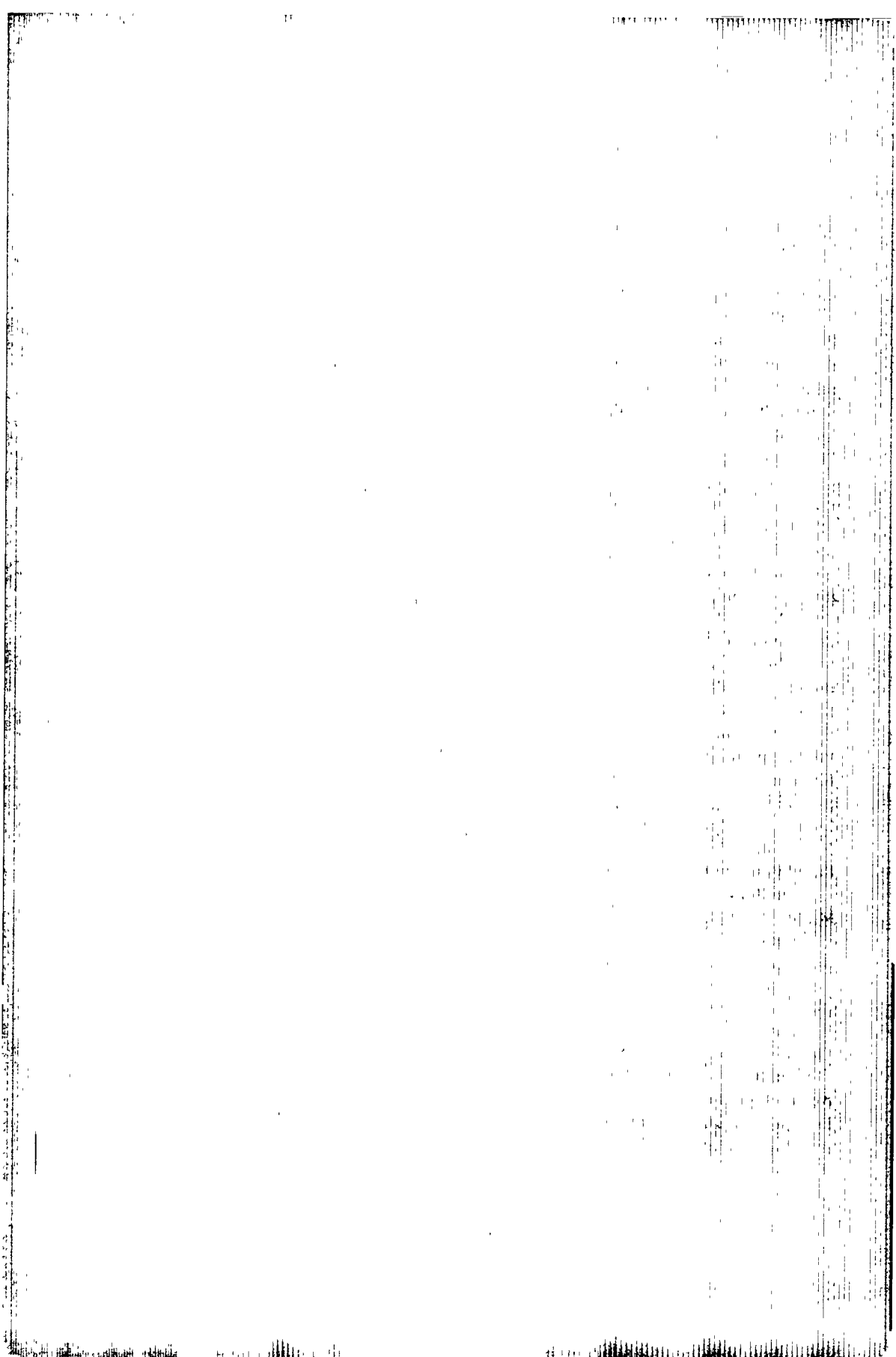
Carla Simone, University of Torino, Italy

Norbert Streitz, GMD-Darmstadt, Germany

Lucy Suchman, Xerox PARC, Palo Alto,  
USA

Yngve Sundblad, KTH, Stockholm, Sweden

Yvonne Waern, Linköping University,  
Sweden





# Table of Contents

## Distributed Social Worlds

Work, Locales and Distributed Social Worlds <i>Geraldine Fitzpatrick (Univ. of Queensland), William J. Tolone and Simon M. Kaplan (Univ. of Illinois at Urbana-Champaign)</i>	1
POLITeam Bridging the Gap between Bonn and Berlin for and with the Users <i>K. Klöckner, P. Mambrey, M. Sohlenkamp, W. Prinz, L. Fuchs, S. Kolvenbach, U. Pankoke-Babatz and A. Syri (GMD, Sankt Augustin)</i>	17
Fragmented Exchange: Disarticulation and the Need for Regionalized Communication Spaces <i>Andrew Clement (Univ. of Toronto) and Ina Wagner (Technische Univ. Wien)</i>	33

## Cooperation and Power

Workflow from Within and Without: Technology and Cooperative Work on the Print Industry Shopfloor <i>John Bowers (Univ. of Manchester), Graham Button (Rank Xerox EuroPARC) and Wes Sharrock (Univ. of Manchester)</i>	51
Cooperation and Power <i>John Sherry (Univ. of Arizona at Tucson)</i>	67

## Collaborative Activities

Reconsidering the Virtual Workplace: Flexible Support for Collaborative Activity <i>Christian Heath (King's College, London and Rank Xerox EuroPARC), Paul Luff (Univ. of Surrey and King's College, London) and Abigail Sellen (Rank Xerox EuroPARC and MRC, Cambridge)</i>	83
--	----

- Contact: Support for Distributed Cooperative Writing  
*Andrew Kirby and Tom Rodden (Lancaster University)* 101
- CSCW for Strategic Management in Swiss Enterprises: An Empirical Study  
*Christian Sauter, Othmar Morger, Thomas Mühlherr, Andrew Hutchison  
 and Stephanie Teufel (Univ. of Zurich)* 117

## CSCW Mechanisms I

- Medium versus Mechanism: Supporting Collaboration Through  
 Customisation  
*Richard Bentley (GMD) and Paul Dourish (Rank Xerox EuroPARC and  
 Univ. College, London)* 133
- The Session Capture and Replay Paradigm for Asynchronous Collaboration  
*Nelson R. Manohar and Atul Prakash (Univ. of Michigan at Ann Arbor)* 149

## Electronic Meetings I

- Virtual Reality Tele-Conferencing: Implementation and Experience  
*Chris Greenhalgh and Steve Benford (Univ. of Nottingham)* 165
- Can the GestureCam be a Surrogate?  
*Hideaki Kuzuoka, Gen Ishimoda, Yushi Nishimura (Univ. of Tsukuba),  
 Ryutaro Suzuki and Kimio Kondo (National Institute of Multimedia  
 Education)* 181
- The Use of Hypermedia in Group Problem Solving: An Evaluation of the  
 DOLPHIN Electronic Meeting Room Environment  
*Gloria Mark, Jörg M. Haake and Norbert A. Streitz (GMD, Darmstadt)* 197

## CSCW Mechanisms II

- The Parting of the Ways: Divergence, Data Management and Collaborative  
 Work  
*Paul Dourish (Rank Xerox EuroPARC and Univ. College, London)* 215
- A General Multi-User Undo/Redo Model  
*Rajiv Choudhary (Intel Corporation) and Prasun Dewan (Univ. of  
 North Carolina)* 231

Supporting Cooperative Awareness with Local Event Mechanisms: The GroupDesk System <i>Ludwig Fuchs, Uta Pankoke-Babatz and Wolfgang Prinz (GMD, Sankt Augustin)</i>	247
---	-----

## Electronic Meetings II

Why Groupware Succeeds: Discretion or Mandate? <i>Jonathan Grudin and Leysia Palen (Univ. of California at Irvine)</i>	263
MAJIC Videoconferencing System: Experiments, Evaluation and Improvement <i>Yusuke Ichikawa, Ken-ichi Okada, Giseok Jeong, Shunsuke Tanaka and Yutaka Matsushita (Keio University)</i>	279
Multimedia Support of Collaboration in a Teleservice Team <i>Steinar Kristoffersen and Tom Rodden (Lancaster University)</i>	293

## Workplace Studies

What Are Workplace Studies For? <i>Lydia Plowman, Yvonne Rogers (Univ. of Sussex) and Magnus Ramage (Lancaster University)</i>	309
Chalk and Cheese: BPR and Ethnomethodologically Informed Ethnography in CSCW <i>Dave Randall (Manchester Metropolitan Univ.), Mark Roucefield and John A. Hughes (Lancaster University)</i>	325
ECSCW'95 Directory: Authors and Programme Committee Members	341
Index of Authors	353



**ECSCW '95 Directory:  
Authors and Committee Members**



**Liam J. Bannon**

Department of computer Science &  
Information Systems  
University of Limerick  
Limerick  
Ireland  
phone: (+353) 61-202 632  
fax: (+353) 61-202 572  
email: bannonl@ul.ie

**Steve Benford**

Department of Computer Science  
The University of Nottingham  
Nottingham NG7 2RD  
United Kingdom  
phone: (+44) 115-951 4203  
fax (+44) 115-951 4254  
email: sdb@cs.nott.ac.uk

**Richard Bentley**

GMD FIT CSCW  
Schloß Birlinghoven  
D-53754 Sankt Augustin  
Germany  
phone: (+49) 2241-142 699  
fax: (+49) 2241-142 084  
email: bentley@gmd.de

**Jeanette Blomberg**

Xerox Palo Alto Research Center  
3333 Coyote Hill Road  
Palo Alto, CA 94304  
USA  
phone: (+1) 415-812 4751  
fax: (+1) 415-812 4380  
email: Blomberg@PARC.Xerox.com

**John Bowers**

Department of Psychology  
University of Manchester  
Oxford Road  
Manchester M13 9PL  
United Kingdom  
phone (+44) 161-275 2599  
fax. (+44) 161-275 2588  
email: bowers@hera.psy.man.ac.uk

**Tone Bratteteig**

Department of Informatics  
University of Oslo  
P O. Box 1080 Blindern  
N-0316 Oslo  
Norway  
phone: (+47) 22-852 427  
fax: (+47) 22-852 401  
email: tone@ifi.uio.no

**Graham Button**

Rank Xerox Research Centre  
Cambridge Laboratory (EuroPARC)  
61 Regent Street  
Cambridge, CB2 1AB  
United Kingdom  
phone: (+44) 223-341 500  
fax (+44) 223-341 510  
email: button@europarc.xerox.com

**Susanne Bødker**

Department of Computer Science  
Aarhus University  
Ny Munkegade 116  
DK-8000 Aarhus C  
Denmark  
phone: (+45) 89423 256  
fax (+45) 89423 255  
email: bodker@daimi.aau.dk

**Matthew Chalmers**

Ubilab  
Union Bank of Switzerland  
Bahnhofstrasse 45  
CH-8021 Zurich  
Switzerland  
phone (+41) 1-236 7504  
fax (+41) 1-236 4671  
email: chalmers@ubilab.ubs.ch

**Rajiv Choudhary**

Intel Corporation  
 Mail Stop JF2-52  
 2111 NE 25th Avenue  
 Hillsboro, Oregon 97124-6497  
 U.S.A  
 phone: (+1) 503-264-8480  
 fax (+1) 503-264-6055  
 email: rajiv\_choudhary@ccm.jf.intel.com

**Claudio Ciborra**

Theseus Institute  
 BP 169  
 Rue Albert Einstein  
 06903 Sophia Antipolis Cedex  
 France  
 phone: (+33) 92 945 100  
 fax: (+33) 92 653 837  
 email: ciborra@theseus.fr

**Andrew Clement**

Faculty of Information Studies  
 University of Toronto  
 140 St. George Street  
 Toronto, Ontario M5S 1A1  
 Canada  
 phone: (+1) 416-978 3111  
 fax: (+1) 416-971 1399  
 email: clement@flis.utoronto.ca

**Prasun Dewan**

Department of Computer Science  
 CB 3175, Sitterson Hall  
 University of North Carolina  
 Chapel Hill, NC 27599-3175  
 USA  
 phone: (+1) 919-962 1823  
 fax (+1) 919-962 1799  
 email: dewan@cs.unc.edu

**Paul Dourish**

Department of Computer Science  
 University College, London  
 Gower Street  
 London WC1E 6BT  
 United Kingdom  
*and*  
 Rank Xerox Research Centre  
 Cambridge Laboratory (EuroPARC)  
 61 Regent Street  
 Cambridge CB2 1AB  
 United Kingdom  
 phone: (+44) 1223-341512  
 fax: (+44) 1223-341510  
 email: dourish@europarc.xerox.com

**Lennart Fahlén**

SICS  
 Box 1264  
 S-164 28 Kista  
 Sweden  
 phone: (+46) 8-752 1539  
 fax: (+46) 8-751 7230  
 email: lef@sics.se

**Geraldine Fitzpatrick**

Department of Computer Science  
 The University of Queensland  
 Queensland 4072  
 Australia  
 phone: (+61) 7-365 2097  
 fax: (+61) 7-365 1999  
 email: g.fitzpatrick@cs.uq.edu.au

**Ludwin Fuchs**

Institute for Applied Information Technology  
 GMD - German National Research Center for  
 Information Technology  
 Schloß Birlinghoven  
 D-53754 Sankt Augustin  
 Germany  
 phone: (+49) 2241-14 2721  
 fax: (+49) 2241-14 2084  
 email: ludwin.fuchs@gmd.de



**Chris Greenhalgh**

Department of Computer Science  
The University of Nottingham  
Nottingham NG7 2RD  
United Kingdom  
phone (+44) 115-951 4225  
fax: (+44) 115-951 4254  
email cmg@cs.nott.ac.uk

**Jonathan Grudin**

Information and Computer Science  
Department  
University of California, Irvine  
Irvine, California  
USA  
phone: (+1) 714-824 8674  
fax: (+1) 714-824 4056  
email: grudin@ics.uci.edu

**Jörg M. Haake**

IPSI - Integrated Publication and Information  
Systems Institute  
GMD - German National Research Center for  
Information Technology  
Dolivostr 15  
D-64293 Darmstadt  
Germany  
phone. (+49) 6151-869 918  
fax (+49) 6151-869 966  
email haake@darmstadt.gmd.de

**Christian Heath**

King's College  
University of London  
Campden Hill Road  
London W8 7AH  
United Kingdom  
phone: (+44) 171-333 4097  
fax (+44) 171 333 4486  
email christian.heath@kcl.ac.uk

**John A. Hughes**

Department of Sociology  
Lancaster University  
Lancaster LA1 4YL  
United Kingdom  
phone: (+44) 1524 594174  
fax: (+44) 1524 594256  
email J.Hughes@lancaster.ac.uk

**Andrew Hutchison**

Department of Computer Science  
University of Zurich  
Winterthurerstrasse 190  
CH-8057 Zurich  
Switzerland  
phone: (+41) 1-257 4581  
fax: (+41) 1-363 0035  
email hutch@ifi.unizh.ch

**Yusuke Ichikawa**

Department of Instrumentation Engineering  
Keio University  
3-14-1 Hiyoshi, Kouhoku-ku, Yokohama  
223 Japan  
phone: (+81) 45-563 1141  
fax: (+81) 45-562 7625  
email ichikawa@myo.inst.keio.ac.jp

**Hiroshi Ishii**

NTT Human Interface Laboratories  
1-2356 Take, Yokosuka-Shi  
Kanagawa, 238-03  
Japan  
phone: (+81) 468-59 3522  
fax (+81) 468-59 2332  
email ishii\_chi@xerox.com

**Gen Ishimoda**

Institute of Engineering Mechanics  
University of Tsukuba  
1-1-1, Tennoudai, Tsukuba, Ibaraki 305  
Japan  
phone: (+81) 298-53 6187  
fax (+81) 298-53 5207  
email ishimoda@kz.tsukuba.ac.jp

**Giseok Jeong**

Department of Instrumentation Engineering  
 Keio University  
 3-14-1 Hiyoshi, Kouhoku-ku  
 Yokohama 223  
 Japan  
 phone: (+81) 45-563 1141  
 fax: (+81) 45-562 7625

**Simon M. Kaplan**

Department of Computer Science  
 University of Illinois at Urbana-Champaign  
 1304 West Springfield Avenue  
 Urbana, Illinois 61801  
 USA  
 phone: (+1) 217-244 0392  
 fax: (+1) 217-333 3501  
 email: kaplan@cs.uiuc.edu

**Viktor Kaptelinin**

Department of Informatics  
 Umeå University  
 S-901 87 Umeå  
 Sweden  
 phone: (+46) 90-165 927  
 fax: (+46) 90-166 550  
 email: vklinin@informatik.umu.se

**John King**

ICS Department  
 University of California  
 Irvine, CA 92717  
 USA  
 phone: (+1) 714-824 6388  
 fax: (+1) 714-854 4994  
 email: king@ics.uci.edu

**Andrew Kirby**

Computing Department  
 Lancaster University  
 Lancaster LA1 4YR  
 United Kingdom  
 phone: (+44) 15-246 5201 x5835  
 fax: (+44) 15-245 93608  
 email: ak@comp.lancs.ac.uk

**Konrad Klöckner**

Institute for Applied Information Technology  
 GMD - German National Research Center for  
 Information Technology  
 Schloß Birlinghoven  
 D-53754 Sankt Augustin  
 Germany  
 phone: (+49) 2241-14 2055  
 fax: (+49) 2241-14 2084  
 email: konrad.kloeckner@gmd.de

**Sabine Kolvenbach**

Institute for Applied Information Technology  
 GMD - German National Research Center for  
 Information Technology  
 Schloß Birlinghoven  
 D-53754 Sankt Augustin  
 Germany  
 phone: (+49) 2241-14 2721  
 fax: (+49) 2241-14 2084  
 email: kovenbach@gmd.de

**Kimio Kondo**

Research and Development Division  
 National Institute of Multimedia Education  
 Ministry of Education  
 2-12, Wakaba, Mihama, Chiba-shi Chiba 261  
 Japan  
 phone: (+81) 43-276 1111  
 fax: (+81) 43-275 5117  
 email: KFH001464@niftyserve.or.jp

**Laszlo Kovacs**

Computer and Automation Institute of the  
 Hungarian Academy of Sciences  
 MTA-SZTAKI, ASZI  
 H-111 Budapest XI  
 Lagymanyosi u. 11  
 Hungary  
 phone: (+36) 1-269 8286  
 fax: (+36) 1-269 8288  
 email: laszlo.kovacs@sztaki.hu

**Steinar Kristoffersen**

Computing Department  
Lancaster University  
Lancaster LA1 4YR  
United Kingdom  
phone: (+44) 15-246 5201, ext 4537  
fax: (+44) 15-245 936 08  
email: steinar@comp.lancs.ac.uk

**Hideaki Kuzuoka**

Institute of Engineering Mechanics  
University of Tsukuba  
1-1-1, Tennoudai, Tsukuba, Ibaraki 305  
Japan  
phone: (+81) 298-53 5258  
fax: (+81) 298-53 5207  
email: kuzuoka@kz.tsukuba.ac.jp

**Paul Luff**

Department of Sociology  
University of Surrey  
Guilford GU2 5XH  
United Kingdom  
phone: (+44) 1483 300800  
fax: (+44) 1483 306290  
email: Paul.Luff@soc.surrey.ac.uk

**Kalle Lyytinen**

Department of Computer Science and  
Information Systems  
University of Jyväskylä  
P.O. Box 35  
SF-40 351 Jyväskylä  
Finland  
phone: (+358) 41-603 025  
fax: (+358) 41-603 011  
email: kalle@jytko.jyu.fi

**Peter Mambrey**

Institute for Applied Information Technology  
GMD - German National Research Center for  
Information Technology  
Schloß Birlinghoven  
D-53754 Sankt Augustin  
Germany  
phone: (+49) 2241-14 2710  
fax: (+49) 2241-14 2084  
email: mambrey@gmd.de

**Nelson R. Manohar**

Department of Electrical Engineering and  
Computer Science  
University of Michigan  
Ann Arbor  
MI 48109-2122  
USA  
phone: (+1) 313-662 1191  
fax: (+1) 313-763 1503  
email: nelsonr@eecs.umich.edu

**Marilyn Mantei**

Department of Computer Science  
University of Toronto  
10 Kings College Road  
Toronto, Ontario M5S 1A1  
Canada  
phone: (+1) 416-978 5512  
fax: (+1) 416-978 4765  
email: mantei@dgp.toronto.edu

**Gloria Mark**

IPSI - Integrated Publication and Information  
Systems Institute  
GMD - German National Research Center for  
Information Technology  
Dolivostr. 15  
D-64293 Darmstadt  
Germany  
phone: (+49) 6151-869 917  
fax: (+49) 6151-869 966  
email: mark@darmstadt.gmd.de

**Hans Marmolin**

IPLab, NADA  
KTH  
100 44 Stockholm  
Sweden  
phone: (+46) 8-790 9106  
fax: (+46) 8-790 0930  
email: hanmarm@nada.kth.se

**Yutaka Matsushita**

Department of Instrumentation Engineering  
Keio University  
3-14-1 Hiyoshi, Kouhoku-ku  
Yokohama 223  
Japan  
phone (+81) 45-563 1141  
fax. (+81) 45-562 7625

**Giorgio De Michelis**

Department of Computer Sciences  
University of Milan  
Via Comelico 39  
201 35 Milan  
Italy  
phone (+39) 2-55006 311  
fax (+39) 2-55006 276  
email gdemich@hermes.dsi.unimi.it

**Othmar Morger**

Department of Computer Science  
University of Zurich  
Winterthurerstrasse 190  
CH-8057 Zurich  
Switzerland  
phone. (+41) 1-257 4581  
fax: (+41) 1-363 0035  
email: morger@ifi.unizh.ch

**Thomas Mühlherr**

Department of Computer Science  
University of Zurich  
Winterthurerstrasse 190  
CH-8057 Zurich  
Switzerland  
phone (+41) 1-257 4581  
fax (+41) 1-363 0035  
email: muehlher@ifi.unizh.ch

**Christine Neuwirth**

Carnegie Mellon University  
Pittsburgh, PA 15213  
USA  
phone: (+1) 412-268 8702  
fax. (+1) 412-268 5288  
email cmn+@andrew.cmu.edu

**Yushi Nishimura**

Institute of Engineering Mechanics  
University of Tsukuba  
1-1-1, Tennoudai, Tsukuba, Ibaraki 305  
Japan  
phone: (+81) 298-53-6187  
fax (+81) 298-53-5207  
email ynishimur@kz.tsukuba.ac.jp

**Ken-ichi Okada**

Department of Instrumentation Engineering  
Keio University  
3-14-1 Hiyoshi, Kouhoku-ku  
Yokohama 223  
Japan  
phone. (+81) 45-563 1141  
fax (+81) 45-562 7625

**Agneta Olerup**

Department of Informatics  
Lund University  
Ole Romers vag 6  
S-223 63 Lund  
Sweden  
phone (+46) 46-222 9764  
fax: (+46) 46-222 4528  
email: agneta.olerup@ics.lu.se

**Leysia Palen**

Information and Computer Science  
Department  
University of California, Irvine  
Irvine, California  
USA  
phone: (+1) 714-824 5086  
fax (+1) 714-824 4056  
email: palen@ics.uci.edu

**Uta Pankoke-Babatz**

Institute for Applied Information Technology  
GMD - German National Research Center for  
Information Technology  
Schloß Birlinghoven  
D-53754 Sankt Augustin  
Germany  
phone: (+49) 2241-14 2707  
fax: (+49) 2241-14 2084  
email uta.pankoke@gmd.de

**Encarna Pastor**

Department of Telematics Systems  
 Engineering  
 Technical University of Madrid  
 ETSI Telecomunicacion  
 Ciudad Universitaria  
 E-28040 Madrid  
 Spain  
 phone: (+31) 1-336 7328  
 fax: (+31) 1-543 2077  
 email: encarna@dit.upm.es

**Lydia Plowman**

School of Cognitive and Computing Sciences  
 University of Sussex  
 Falmer, Brighton  
 BN1 9QH  
 United Kingdom  
 phone: (+44) 1273-678 647  
 fax: (+44) 1273-671 320  
 email: lydiap@cogs.sussex.ac.uk

**Atul Prakash**

Department of EECS  
 University of Michigan  
 Ann Arbor, MI 48109-2122  
 USA  
 phone: (+1) 313-763 1585  
 fax: (+1) 313-763 1503  
 email: aprakash@eeecs.umich.edu

**Wolfgang Prinz**

Institute for Applied Information Technology  
 GMD - German National Research Center for  
 Information Technology  
 Schloß Birlinghoven  
 D-53754 Sankt Augustin  
 Germany  
 phone: (+49) 2241-14 2730  
 fax: (+49) 2241-14 2084  
 email: prinz@gmd.de

**Magnus Ramage**

Department of Computing  
 Lancaster University  
 Lancaster, LA1 4YR  
 United Kingdom  
 phone: (+44) 1524-65201 x4537  
 fax: (+44) 1524-593608  
 email: magnus@comp.lancs.ac.uk

**Dave Randall**

Department of Interdisciplinary Studies  
 Manchester Metropolitan University  
 Manchester, M15 6BG  
 United Kingdom  
 phone: (+44) 161 247 3037  
 fax: (+44) 161 247 6321  
 email: D.Randall@mmu.ac.uk

**Mike Robinson**

GMD FIT CSCW  
 Schloß Birlinghoven  
 D-53757 Sankt Augustin  
 Germany  
*and*  
 SAGEFORCE LTD  
 61 Kings Road  
 Kingston-upon-Thames  
 Surrey KT2 5JA  
 United Kingdom  
 phone: (+44) 81-546 5099  
 fax: (+44) 81-255 1365  
 email: robinson@gmd.de

**Tom Rodden**

Computing Department  
 Lancaster University  
 Lancaster LA1 4YR  
 United Kingdom  
 phone: (+44) 15-2459 3823  
 fax: (+44) 15-2459 3608  
 email: tam@comp.lancs.ac.uk

**Yvonne Rogers**

School of Cognitive and Computing Sciences  
 University of Sussex  
 Falmer, Brighton  
 BN1 9QH  
 United Kingdom  
 phone. (+44) 1273-606755 x2414  
 fax: (+44) 1273-671320  
 email: yvonner@cogs.sussex.ac.uk

**Mark Rouncefield**

Department of Sociology  
 Lancaster University  
 Lancaster LA1 4YL  
 phone: (+44) 15-2459 4186  
 fax: (+44) 15-2459 4256  
 email: soa031@cent1.lancs.ac.uk

**Christian Sauter**

Department of Computer Science  
 University of Zurich  
 Winterthurerstrasse 190  
 CH-8057 Zurich  
 Switzerland  
 phone. (+41) 1-257 4581  
 fax: (+41) 1-363 0035  
 email: sauter@ifi.unizh.ch

**Kjeld Schmidt**

System Analysis Department  
 Risø National Laboratory  
 P.O. Box 49  
 DK-4000 Roskilde  
 Denmark  
 phone (+45) 4237 1212  
 fax: (+45) 4675 5170  
 email: kschmidt@risoe.dk

**Abigail Sellen**

Rank Xerox Research Centre  
 Cambridge Laboratory (EuroPARC)  
 61 Regent St  
 Cambridge, CB2 1AB  
 United Kingdom  
 phone: (+44) 12-2334 1513  
 fax. (+44) 12-2334 1525  
 email. sellen@europarc.xerox.com

**Wes Sharrock**

Department of Sociology  
 University of Manchester  
 Manchester, M13 9PL  
 United Kingdom  
 phone: (+44) 61-275 2510  
 fax: (+44) 61-275 2514  
 email: wes.sharrock@man.ac.uk

**John Sherry**

Department of Anthropology  
 Haurly Building Room 219  
 University of Arizona  
 Tucson, AZ 85721  
 USA  
 phone. (+1) 520-621 2966  
 fax: (+1) 520-621 2088  
 email: jsherry@anthro.arizona.edu

**Carla Simone**

Department of Computer Sciences  
 University of Torino  
 Corso Svizzera 185  
 I-10148 Torino  
 Italy  
 phone: (+39) 11 7429 236  
 fax. (+39) 11 7712002  
 email. simone@di.unito.it

**Markus Sohlenkamp**

Institute for Applied Information Technology  
 GMD - German National Research Center for  
 Information Technology  
 Schloß Birlinghoven  
 D-53754 Sankt Augustin  
 Germany  
 phone: (+49) 2241-14 2872  
 fax: (+49) 2241-14 2084  
 email: sohlenkamp@gmd.de

**Norbert A. Streitz**

IPSI - Integrated Publication and Information  
Systems Institute  
GMD - German National Research Center for  
Information Technology  
Dolivostr 15  
D-64293 Darmstadt  
Germany  
phone: (+49) 6151-869 919  
fax: (+49) 6151-869 966  
email: streitz@ darmstadt.gmd de

**Lucy Suchman**

Xerox Palo Alto Research Center  
3333 Coyote Hill Road  
Palo Alto, CA 94303  
USA  
phone: (+1) 415-812 4340  
fax: (+1) 415-812 4380  
email: suchman@parc.xerox.com

**Yngve Sundblad**

IPlab, NADA  
KTH  
S-100 44 Stockholm  
Sweden  
phone (+46) 8-790 7147  
fax: (+46) 8-790 0930  
email: yngve@nada.kth.se

**Ryutaro Suzuki**

Research and Development Division  
National Institute of Multimedia Education  
Ministry of Education  
2-12, Wakaba, Mihama, Chiba-shi Chiba 261  
Japan  
phone (+81) 43-276 1111  
fax: (+81) 43-275 5117  
email: KFG00535@niftyserve.or.jp

**Anja Syri**

Institute for Applied Information Technology  
GMD - German National Research Center for  
Information Technology  
Schloß Birlinghoven  
D-53754 Sankt Augustin  
Germany  
phone: (+49) 2241-14 2762  
fax: (+49) 2241-14 2084  
email: syri@gmd.de

**Shunsuke Tanaka**

Department of Instrumentation Engineering  
Keio University  
3-14-1 Hiyoshi, Kouhoku-ku  
Yokohama 223  
Japan  
phone: (+81) 45-563 1141  
fax: (+81) 45-562 7625

**Stephanie Teufel**

Department of Computer Science  
University of Zurich  
Winterthurerstrasse 190  
CH-8057 Zurich  
Switzerland  
phone: (+41) 1-257 4335  
fax: (+41) 1-363 0035  
email: teufel@ifi.unizh.ch

**William J. Tolone**

Department of Computer Science  
University of Illinois at Urbana-Champaign  
1304 West Springfield Avenue  
Urbana, Illinois 61801  
USA  
phone: (+1) 217-333 4201  
fax: (+1) 217-333 3501  
email: tolone@cs.uiuc.edu

**Ina Wagner**

Abteilung fuer CSCW  
Institut fur Gestaltungs- und  
Wirkungsforschung  
Vienna Technical University  
Argentinierstrasse 8  
A-1040 Vienna, Austria  
phone: (+43) 1-588 01 4439  
fax: (+43) 1-504 2478  
email: iwagner@email.tuwien.ac.at

**Yvonne Wærn**

Department of Communication Studies  
Linköping University  
S-581 83 Linköping  
Sweden  
phone: (+46) 13-282 937  
fax: (+46) 13-282 299  
email: yvowa@tema.liu.se